



# TEST REPORT

Rep. No. : 20-02-RBD-006

Applicant : Gainta Industries Ltd.

Address : 1F., NO.30, LANE 54, CHUNG CHENG RD.,  
XINDIAN DIST., NEW TAIPEI CITY 231, TAIWAN  
(R.O.C.)

Commodity : Sealed Plastic Box

Model : A30393-IP68

Serial Model : See below Annex A

Quantity : 2 sets

Date of Receipt : Feb, 13, 2020

Date of Testing : Feb, 19, 2020

Test specification : IEC 60529 : 2015

Ambient Environment : Temp. 22 °C, 52% R.H., A.P. 996 mbar

Test Item : IP68

Test condition & result : See the following sheets

**General remarks :**

The laboratory will make conformity judgments based on the above test criteria, and the decisive rules of compliance do not consider the uncertainty. The test results presented in this report relate only to the object tested. This report shall not be reproduced, except in full, without the written approval of the Issuing testing laboratory.



\*\*\*\*\*

Approved by :                     Sky Kuo                      
 Sky Kuo

\*\*\*\*\*



# TEST REPORT

Report No. : 20-02-RBD-006

Page: 2 of 18 Pages

\*\*\*\*\*

## 1. Test Item : IP68

1.1 Test model: A313-IP68 、 A30393-IP68

## 2. Test Conditions :

### 2.1 Ambient Condition

- Temperature range:15 °C to 35 °C.
- Relative humidity:25 % to 90 %.
- Air pressure:860 mbar to 1060 mbar.

### 2.2 IP6X (In accordance with IEC 60529 13.4 test)

- Dust:Talcum powder.
- The amount of dust:2 kg/m<sup>3</sup>.
- Maximum depression of 2kPa.(20mbar).
- The duration of the test is 8 hr.

### 2.3 IPX8 (In accordance with IEC 60529 14.2.7/14.2.8 test)

- The lowest point of enclosures with a height less than 850 mm is located 1000 mm below the surface of the water;
- The highest point of enclosures with a height equal to or greater than 850 mm is located 150 mm below the surface of the water;
- The duration of the test is 60 min;
- The water temperature does not differ from that of the equipment by more than 5 K.

## 3. Test Result :

IP Code	Results	Acceptance Criteria
IP6X	There is no trace of dust inside.	IEC 60529 13.6
IPX8	There is no trace of water inside.	IEC 60529 14.3

Tested by :

Sam Wei

Sam Wei



# TEST REPORT

Report No. : 20-02-RBD-006

Page: 3 of 18 Pages

\*\*\*\*\*

## Utilized testing equipments 試驗設備列表

Test Mode 測試項目	Kind of Instrument Precision Class 設備名稱	Manufacturer 製造商	Model Serial No. 型號,序號或其它資訊	Scan Data 下次校驗日期
IP1X	Test sphere(50mm)球狀試驗棒	ASIA	TSP-01 (7060307)	2020/06/06
IP2X	Test finger(12.5mm)IEC 關節指	ASIA	TFP-01 (7060308)	2020/06/06
IP3X	Test rod,2.5mm(D)x100mm(L)試驗棒	ASIA	TRP-01 (7060309)	2020/06/06
IP4X	Test rod,1mm(D)x100mm(L) 試驗棒	ASIA	TRP-02 (7060310)	2020/06/06
√ IP5~6X	DUST TEST CHAMBER.防塵試驗機	CHTEK	CH-7139-C22 (CH-7139C22-170604)	2020/04/10
IPX1~2	Drip Box 滴水試驗裝置	CHTEK	CH-2010-S6 (CH-2010S6-170603)	2020/03/24
IPX3~4	Oscillating Tube 灑水及濺水試驗裝置	CHTEK	CH-2010-S6 (CH-2010S6-170603)	2020/03/24
IPX5~6	Hose Nozzle 對噴流保護檢測用試驗裝置	CHTEK	CH-2010-S6 (CH-2010S6-170603)	2020/03/24
√ IPX7~8	Metel Water sink 金屬水槽	CHTEK	CH-2010-78 (CH-2010-78-170607)	N/A
√	Temperature recorder 溫度記錄器	GRAPHTEC	GL840 (C60321146)	2021/01/08
√	Tape Measure 捲尺	JK-S	JK-S 8M	2020/11/14
√ IP5~6X	75 μm 圓篩	CHTEK	No.200	2020/04/16
√	Stop watch 碼錶	Casio	403Q25R	2020/08/04
√	Temperature and humidity atmospheric pressure gauge 溫濕度大氣壓力計	KIMO	KPA-320	2020/08/22



# TEST REPORT

Report No. : 20-02-RBD-006

Page: 10 of 18 Pages

\*\*\*\*\*



IPX8 Test (A313-IP68)



There is no trace of water inside.



# TEST REPORT

Report No. : 20-02-RBD-006

Page:11 of 18 Pages

\*\*\*\*\*



There is no trace of water inside.



IPX8 Test (A30393-IP68)



# TEST REPORT

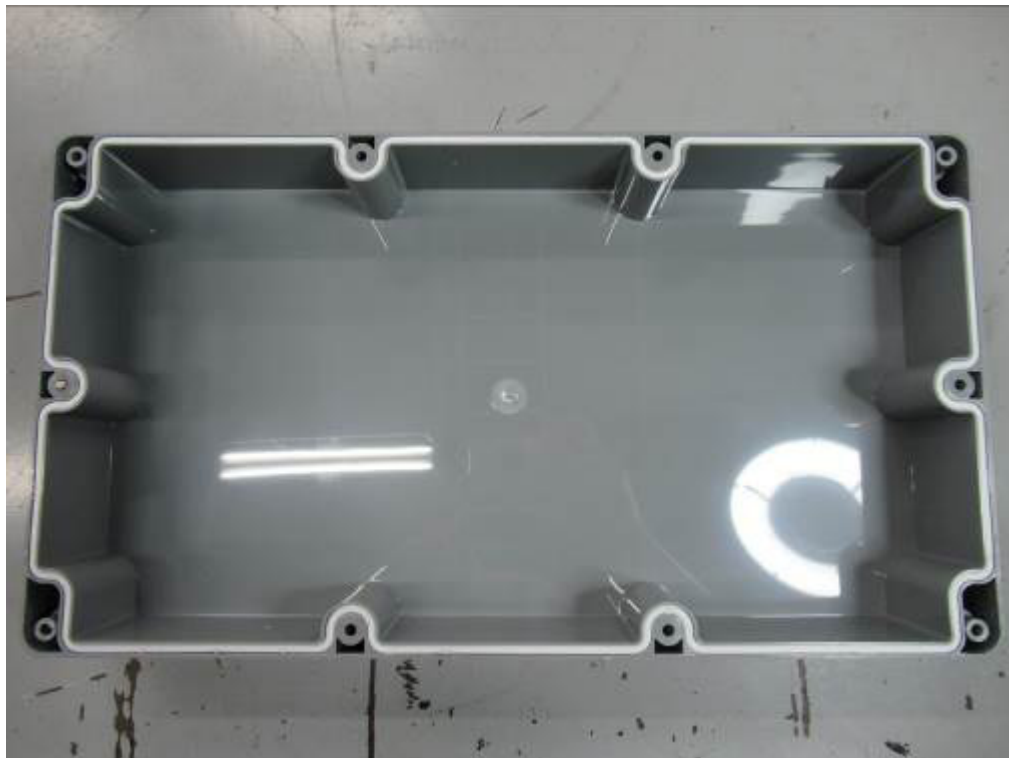
Report No. : 20-02-RBD-006

Page: 12 of 18 Pages

\*\*\*\*\*



There is no trace of water inside.



There is no trace of water inside.

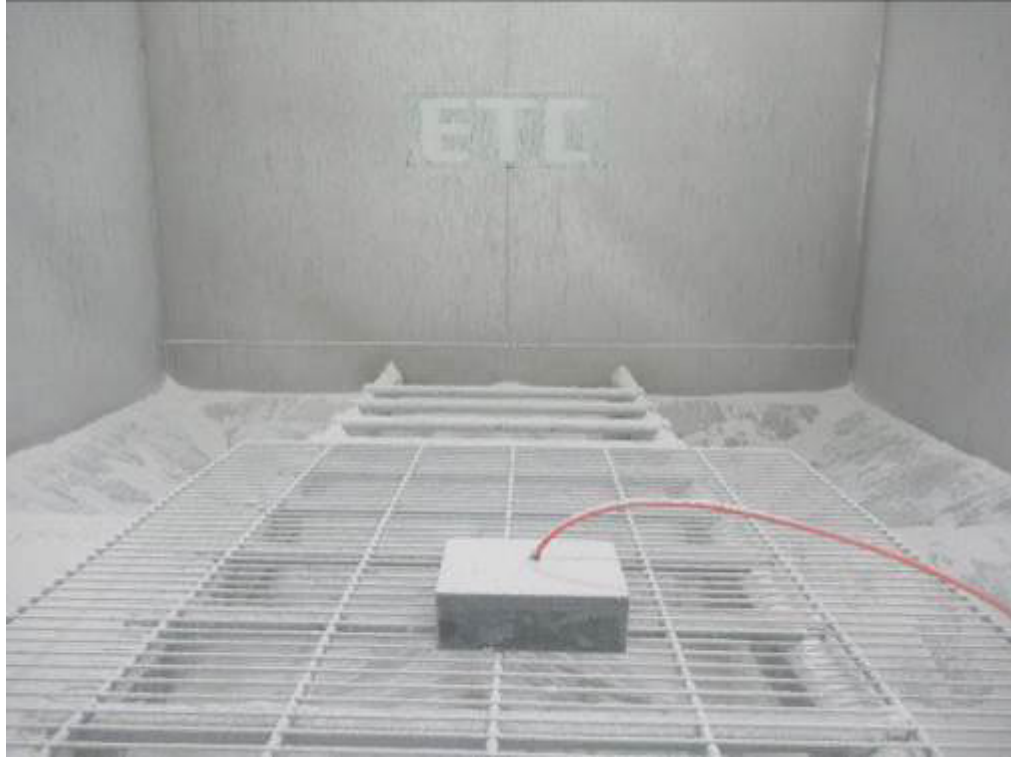


# TEST REPORT

Report No. : 20-02-RBD-006

Page: 13 of 18 Pages

\*\*\*\*\*



IP6X Test (A313-IP68)



There is no trace of dust inside.



# TEST REPORT

Report No. : 20-02-RBD-006

Page: 14 of 18 Pages

\*\*\*\*\*



There is no trace of dust inside.



There is no trace of dust inside.





# TEST REPORT

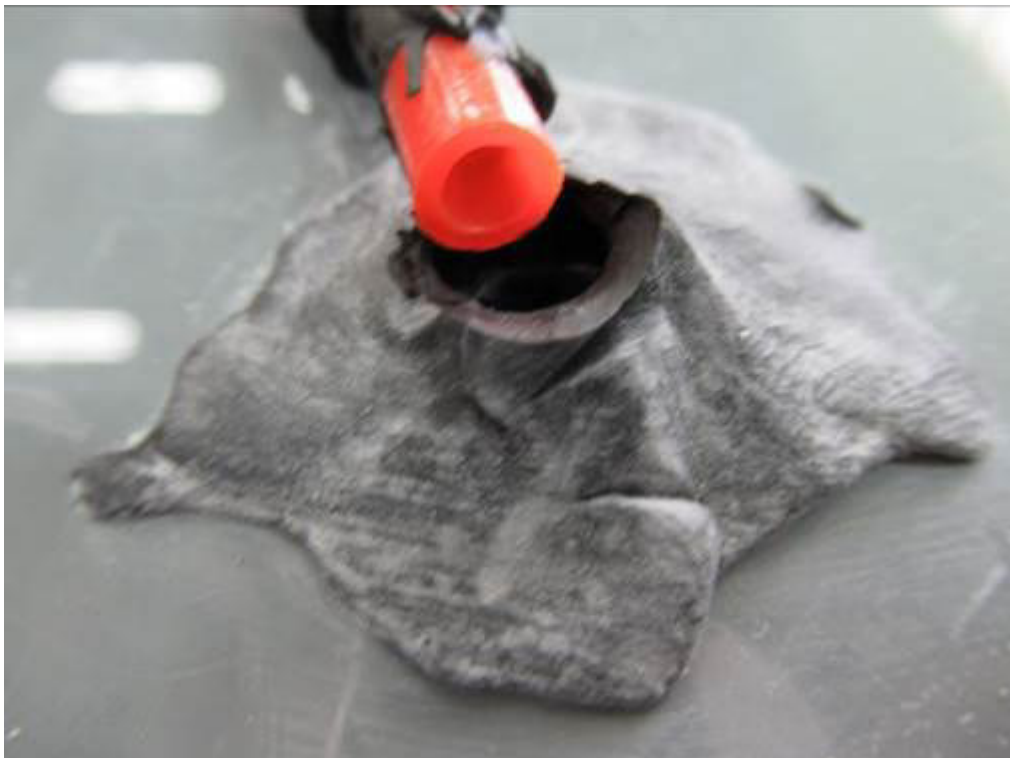
Report No. : 20-02-RBD-006

Page: 15 of 18 Pages

\*\*\*\*\*



IP6X Test (A30393-IP68)



There is no trace of dust inside.



# TEST REPORT

Report No. : 20-02-RBD-006

Page: 16 of 18 Pages

\*\*\*\*\*



There is no trace of dust inside.



There is no trace of dust inside.



# TEST REPORT

Report No. : 20-02-RBD-006

Page: 17 of 18 Pages

\*\*\*\*\*

## Annex A Series difference table

<b>A3XX-IP68 / A3XXMF-IP68 Series IP68 TESL LIST</b>				
<b>A3XX-IP68 / A3XXMF-IP68 Series</b>				
item	Model no.	Color		External dimensions (mm)
		LID	BASE	
1	A302-IP68	DARK GREY	DARK GREY	64 x 58 x 35
2	A304-IP68	DARK GREY	DARK GREY	115 x 65 x 40
3	A308-IP68	DARK GREY	DARK GREY	115 x 65 x 55
4	A311-IP68	DARK GREY	DARK GREY	115 x 90 x 55
5	A313-IP68	DARK GREY	DARK GREY	171 x 121 x 55
6	A317-IP68	DARK GREY	DARK GREY	222 x 146 x 55
7	A331-IP68	DARK GREY	DARK GREY	115 x 90 x 80
8	A340-IP68	DARK GREY	DARK GREY	171 x 121 x 80
9	A346-IP68	DARK GREY	DARK GREY	195 x 80 x 55
10	A353-IP68	DARK GREY	DARK GREY	222 x 146 x 75
11	A362-IP68	DARK GREY	DARK GREY	52 x 50 x 35
12	A366-IP68	DARK GREY	DARK GREY	82 x 80 x 55
13	A368-IP68	DARK GREY	DARK GREY	160 x 80 x 55
14	A369-IP68	DARK GREY	DARK GREY	160 x 80 x 85
15	A386-IP68	DARK GREY	DARK GREY	120 x 120 x 60
16	A387-IP68	DARK GREY	DARK GREY	120 x 120 x 90
17	A396-IP68	DARK GREY	DARK GREY	160 x 160 x 60
18	A399-IP68	DARK GREY	DARK GREY	160 x 160 x 90
19	A3735-IP68	DARK GREY	DARK GREY	200 x 120 x 75
20	A3783-IP68	DARK GREY	DARK GREY	265 x 185 x 95
21	A3008-IP68	DARK GREY	DARK GREY	240 x 160 x 90
22	A3019-IP68	DARK GREY	DARK GREY	240 x 160 x 120
23	A30285-IP68	DARK GREY	DARK GREY	300 x 230 x 86
24	A30312-IP68	DARK GREY	DARK GREY	300 x 230 x 111
25	A30393-IP68	DARK GREY	DARK GREY	360 x 200 x 150



# TEST REPORT

Report No. : 20-02-RBD-006

Page: 18 of 18 Pages

\*\*\*\*\*

item	Model no.	Color		External dimensions (mm)
		LID	BASE	
1	A300MF-IP68	DARK GREY	DARK GREY	90 x 35 x 35
2	A302MF-IP68	DARK GREY	DARK GREY	64 x 58 x 35
3	A304MF-IP68	DARK GREY	DARK GREY	115 x 65 x 40
4	A308MF-IP68	DARK GREY	DARK GREY	115 x 65 x 55
5	A311MF-IP68	DARK GREY	DARK GREY	115 x 90 x 55
6	A313MF-IP68	DARK GREY	DARK GREY	171 x 121 x 55
7	A317MF-IP68	DARK GREY	DARK GREY	222 x 146 x 55
8	A331MF-IP68	DARK GREY	DARK GREY	115 x 90 x 80
9	A340MF-IP68	DARK GREY	DARK GREY	171 x 121 x 80
10	A353MF-IP68	DARK GREY	DARK GREY	222 x 146 x 75
11	A362MF-IP68	DARK GREY	DARK GREY	52 x 50 x 35
12	A366MF-IP68	DARK GREY	DARK GREY	82 x 80 x 55
13	A368MF-IP68	DARK GREY	DARK GREY	160 x 80 x 55
14	A369MF-IP68	DARK GREY	DARK GREY	160 x 80 x 85
15	A386MF-IP68	DARK GREY	DARK GREY	120 x 120 x 60
16	A387MF-IP68	DARK GREY	DARK GREY	120 x 120 x 90
17	A3735MF-IP68	DARK GREY	DARK GREY	200 x 120 x 75
18	A3783MF-IP68	DARK GREY	DARK GREY	265 x 185 x 95